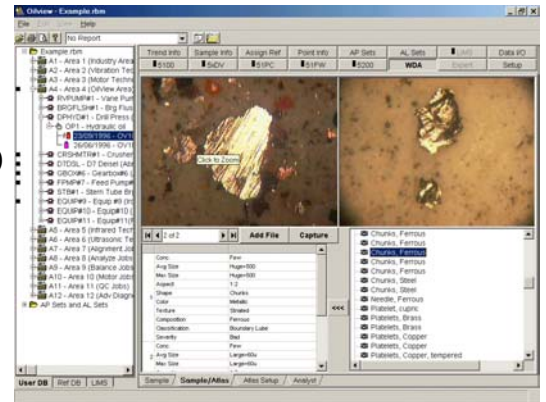


...Wear Debris Analysis

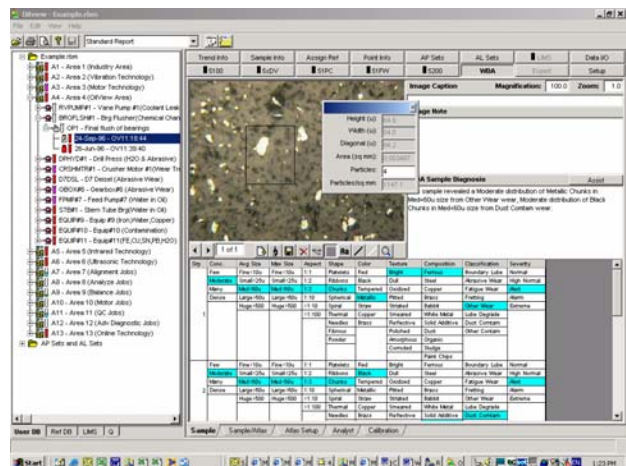
Features

- SAMPLE ANALYSIS PAGE
- EASY SELECTION OF PARTICLE SIZE AND CONCENTRATION
- SAMPLE ATLAS, WITH IMAGE AND IMAGE TREE
- MULTI-PICTURE OPTIONS FOR THE ANALYST



When you look at wear debris you need to identify...

- 1) Corrosive wear (rust caused by water and bad oil)
- 2) Abrasive wear (cutting caused by dust)
- 3) Fatigue wear (chunks and platelets normally caused by vibration related problems)
- 4) Adhesive wear (boundary wear caused by lube starvation)
- 5) Contamination in the oil.



Wear debris and contaminants are segregated by size and iron composition for measurement using the OilView Ferrous Wear Monitor and for microscopic analysis using the **OilView Wear Debris Analysis (WDA) Software module**. The WDA software allows full interpretation of wear debris particle results. The analyse button offers recommendations based on hundreds of pre-programmed entries of particle types and sizes. The Wear Debris Analysis software module allows interpretation and analysis of the pictures taken with your 52 Lab Microscope.

| Part # | Description |
|---------|-----------------------------------|
| A475103 | WDA Wear Debris Analysis Software |

Terms and Conditions

Delivery: - Ex-Works Melbourne Generally 4-6 weeks
 Terms: - Net fourteen (14) days from date of invoice for credit account customers
 Condition of Sale: - Property in these goods does not pass until this invoice has been paid in full
 OVERSEAS Companies: - 100% Prepayment Required
 Cancellation & Returned Equipment: - Orders may only be cancelled by purchaser upon Sigma - MSC's written consent and upon payment of a 20% cancellation/restocking fee.
 NOTE: Prices subject to change without notice
 3% Charge Applies for Credit Card and Administration Fee (VISA, MasterCard)
 10% GST Applies where applicable



ph 03 9237 7577 fax 03 9761 5090
 email: sales.msc@sigenergy.com
 web: www.maintsys.com.au